

WORLD COMMUNITY DEVELOPMENT CONFERENCE

2023



*'We talk to country, our country
talks to us. This is Larrakia
country, we are Larrakia people
and we will always be here...
Please respect our country.'*

Bundilla Barbara Mills-Raymond, 2005



ABOUT THE ARTWORK

The Larrakia of Garramilla (Darwin) are known as Saltwater people. The artwork created by Cian Mungatj McCue incorporates the dungalaba (saltwater crocodile) to symbolise Saltwater. Larrakia Country also extends out to Freshwater, so Cian has also incorporated gakingga (magpie goose) to signify Freshwater Country. Gakingga is an animal that moves in search of water and food sources as the seasons change. In this case the gakingga also symbolises the WCDC moving from Country to Country. The central piece of artwork, which incorporates elements from the WCDC logo, symbolises everyone meeting on Larrakia Country for the conference.

Most of the colours within the artwork are earthier ochre tones, with the inclusion of water tones to signify saltwater and freshwater.

THANK YOU & LARRAKIA PROTOCOLS

We would like to thank and acknowledge the contributions to the 2023 World Community Development Conference by the following individuals and organisations:

Conference Cultural Adviser:

Aunty Bilawara Lee

Conference Planning Team:

Michelle Dunscombe,
International Association
for Community
Development and Jeder
Institute

Dee Brooks, Jeder Institute

Denise Bijoux, Catalyse NZ,
Aotearoa

Dr Anne Jennings,
Australian Journal of
Community Work

Jesu Jacob, Australian
Community Workers
Association

Emeritus Professor Sue
Kenny, Deakin University

Heather Ellis, BlueWren
Connections

Social Media Team

Cherish Page-Brooks

Dr Peter Westoby

Rachael Donovan

Fiona Miller, Jeder Institute
Vicky Mann

Dr Jamie Mapleson,
Aboriginal Resource and
Development Services Inc.
(ARDS)

Jacques Boulet, New
Community (Quarterly)

Om Dhungel

Megan Courtney, Inspiring
Communities, Aotearoa

Ashleigh Dunscombe

Administration Support

Nadene Marsh

Videographer

Tina Torrens

WCDC 2023 Program Design

Moogie Down Productions

THE CULTURAL PROTOCOLS OF THE LARRAKIA PEOPLE

1. Larrakia are the Aboriginal owners of all land and waters of the greater Darwin and rural area, including all identified Aboriginal living areas.
2. Aboriginal law requires respect for the cultural authority of the Aboriginal owners.
3. We speak for our country and we have an obligation, along with our neighbours, to care for our country.
4. Visitors should respect that we retain traditional knowledge, such as stories about significant sites.
5. All visitors are responsible for their behaviour and should respect the guidance of Larrakia.
6. Learning about country is everybody's obligation, including; visitors, residents, NGOs and government.
7. Inappropriate behaviour reflects badly on Larrakia people & we do not accept it.

WCDC 2023 CONFERENCE PARTNERS.



ACWA
AUSTRALIAN COMMUNITY
WORKERS ASSOCIATION



COMMUNITY FIRST
DEVELOPMENT



COMMUNITY HOUSING LTD
GROUP OF COMPANIES



WELCOME TO THE 2023 WORLD COMMUNITY DEVELOPMENT CONFERENCE "FROM THE EDGE"

We are thrilled to gather here on Larrakia Country in Darwin, nestled on the edge of land and sea, to embark on a journey that celebrates the profound impact of "Culture, Connection, and Community" in the field of community development.

This conference recognises that culture is a powerful foundation for community development, shaping identities, values, and social norms. Over the next four days, together, we will explore how embracing cultural diversity and honouring traditional knowledge can drive positive transformation in communities worldwide through connection and community.

Our program offers a diverse range of activities and opportunities for learning, sharing, and connecting. We invite you to ignite your imagination, inspire your passion, challenge your perspectives and to immerse yourself in the rich tapestry of cultural diversity, deep connections, and resilient communities that will be at the heart of our discussions and experiences.

Engage in captivating keynote presentations delivered by renowned speakers who embody the spirit of the conference. Participate in interactive workshops and hands-on sessions where you can deepen your understanding of innovative practices, tools, and approaches in community development.

Join Yarning Circles and presentations for thought-provoking conversations and the exploration of emerging trends and transformative ideas. Network with like-minded individuals, forge meaningful collaborations, and build lasting connections with community development practitioners, researchers, and activists from around the world.

Embracing the conference theme, we will celebrate the cultural heritage and traditional practices of the region. Experience the richness of Indigenous cultures through cultural performances, art exhibitions, and storytelling sessions. Practice Exchanges offer a firsthand experience of the impactful initiatives that have emerged from the edges of communities, leaving a lasting imprint on their social fabric and providing pathways into positive futures.

As we gather for this transformative conference, we extend our deepest gratitude to our sponsors, partners, and dedicated volunteers who have made this event possible. Their commitment to community development has been instrumental in bringing us all together to share, learn, and grow.

On behalf of the organising committee, we welcome you. Let us weave together the threads of culture, connection, and community at the 2023 World Community Development Conference "From the Edge" in Darwin.

With warmest regards,

Michelle Dunscombe, Dee Brooks, and Denise Bijoux
IACD Trustees and Members

On behalf of the 2023 World Community Development Conference organising team

AUSTRALIAN COMMUNITY WORKERS ASSOCIATION WELCOME

The Australian Community Workers Association is delighted to be one of the local hosts for this ground breaking 2023 World Community Development Conference 'From the Edge'. We are excited to welcome delegates from around our own beautiful country as well as friends and colleagues from around the world. As with our co-hosts we look forward to building on our collective knowledge and learning from other practitioners, researchers, funders and policy makers from the far reaches of Australia and the globe. We wish you all an informative and collaborative conference and a wonderfully immersive experience in Darwin.



WCDC 2023, IACD, and ACWA pay their respects to the Larrakia people, traditional owners of the land upon which this conference takes place, and to their elders past present and emerging.

CONFERENCE PROGRAM

MONDAY 19TH JUNE – WELCOME RECEPTION

6.00pm – 8.00pm **International Welcome Reception**
 Welcome to Country with [Aunty Bilawara Lee](#)
 & Saltwater ceremony with [Uncle Tony Lee, Larrakia Nation](#)
Registration desk open

TUESDAY 20TH JUNE DAY 1 THEME – CULTURE

8.00am *Registration desk open*

9.00am Welcome to Country with Aunty Bilawara Lee, Larrakia Nation
 Official Opening with IACD Chair Anna Clarke & IACD Vice Chair Michelle Dunscombe

9.30am **Ani Pahuru-Huriwai, Tumuaki/Executive Director, [Tairawhiti REAP](#), Aotearoa**
"Ae Neni, he tipuna pai koe." "Yes, Grandmother, you were a good ancestor." The struggle against-all-odds to leave the planet a better place than we found it.
Karri-Lynn Paul, Nutokehikemit, Program Teaching Staff Circle of Abundance – Indigenous Programs, [Coady Institute](#), St. Francis Xavier University, Canada
 Building on Abundance in Indigenous Communities.
Samuel Bush-Blanasi, Chair, [Northern Land Council](#), Australia.
 Community-led development in the Top End.

11.00am – 11.30am *Morning Tea*

CONCURRENT PRESENTATIONS

	WATERFRONT 1	WATERFRONT 2	WATERFRONT 3
11.30am	Use Festivals to grow, skill & find community together. Sheena Lindholm, Push Pull Marketing, Australia	Aboriginal-led Community Projects: supporting self-determination in practice Joy Cardona, Malak-Malak traditional Aboriginal owner & Northern Land Council Member & Sarah Rennie, Northern Land Council, Community Planning & Development Manager	Moving from sharing baked goods to building peer-to-peer participation: the growth of the Neighbours Aotearoa movement Harriet Paul, Cissy Rock & Vanessa Cole, Community Think, Aotearoa, New Zealand
11.45am	Living Arts - More than paintbrushes & drumsticks Phi Theodoros, Avril Hale, Natasha Sumner & Mark Timberlake, Life Without Barriers, Australia	To...For...With...By Jane Ellery, E2Praxis, USA	Whose Edge? Recentring 'others' Emily McConochie, University of Queensland, Australia
12.00pm	Q & A	Q & A	Q & A
12.15pm	Living Arts – Links for Life (Workshop) Phi Theodoros, Avril Hale, Natasha Sumner & Mark Timberlake, Life Without Barriers, Australia	Homelands development in remote Australia: More than just infrastructure Djarrany-Djarrany traditional Aboriginal owners	Exploring the bonding & bridging social capital through the intersectionality lens Suet-lin Hung, Kwok-kin Fung & Lang-jie He, Hong Kong Baptist University
12.30pm		The Hapū-led Business Model Naumai Taurua, Aotearoa - New Zealand	Sex role egalitarian attitude & community social capital in a low-income community Suet-lin Hung, Kwok-kin Fung & Lang-jie He, Hong Kong Baptist University
12.45pm		Q & A	Q & A

CONCURRENT WORKSHOPS

	MEETING ROOM 1	MEETING ROOM 2
11.30am – 12.30pm	Creating a Platform for Indigenous Rights & Sovereignty: An active workshop to explore relationships between sovereign & indigenous nations & their external Holly Scheib & Shawn Duran, MS, COO Taos Pueblo, USA	What does accountable allyship look like in your community? Jaki Adams, Fred Hollows Foundation, Australia & Sarah Morris, Aotearoa

12.00pm – 1.00pm	MEETING ROOM 3 Tribes Lead!: Indigenous Ways of Knowing at the Edge of Tribal Leadership Development Annie Jones & Jennifer Gauthier, University of Wisconsin - Extension, USA		MEETING ROOM 4 Yitakimaninjaku, warrirninjaku manu pina-jarrinjaku 'Tracking & Learning': breaking the traditional model of monitoring & evaluation on Warlpiri country Alex Gyles, Marlkindi Rose Napaljarri, Glenda Wayne Napaljarri, Belinda Wayne Napaljarri & Natalie Morton Napurrurla, Warlpiri Education and Training Trust, Australia
1.00pm – 2.00pm	Lunch		
CONCURRENT PRESENTATIONS			
2.00pm	WATERFRONT 1 A Non-intrusive Approach to Documenting First Nation Cultural Heritage Landscapes Dr Peter Ellery, E2Praxis, USA & Heather Threadgold, PhD & Melinda Kennedy, Murri Yul	WATERFRONT 2 'Strengthening Neighbourly Connections Project – intentional doorstep engagement to facilitate sustainable relationships & community participation' Sandiellen Black & Paula Callaghan. Benarrawa Community Development Association, Australia	WATERFRONT 3 Mia Mia Community Development Cheryl Kickett-Tucker, Dawn Bessarab & Juli Coffin
2.15pm	Staying with tribal & caring by culture design: the implement of aging care services at Tribal Culture Health Station in Taiwan Chi-Wei Cheng & Leang-yang Lai. Dong Hwa University, Taiwan	Anchoring Community Development Practice on Culture: Perspectives from Africa Daniel Muia, Kenyatta University, Kenya	
2.30pm	Q & A	Q & A	Q & A
2.45pm	"We are far from things!": Occupational engagement among rural youth in South Africa Wilson Majee. University of Missouri, USA	Nurruyirr'yundhu Yolŋuwal gakalyu nrurunjy – Start with the Yolŋu way first: Insights from 50 years of Community Development work. Gawura Wanambi & Jamie Mapleson. ARDS Aboriginal corporation, Australia	Exploring ways Community, Culture & Connection can contribute to expanded Socio-Ecological Community Development. Anne Jennings, Australia
3.00pm	Communities in disasters Margot Rawsthorne - Presenter, Co-Authors: Amanda Howard & Pam Joseph. University of Sydney, Australia	Community Development in Social Housing Jamie Hutchinson, Community Housing Ltd	Children's Ground: Backing Aboriginal people to lead the way Bridgette Beer, Veronica Turner, Pauline Grant & Jen Lorains Children's Ground, Australia.
3.15pm	Q & A	Q & A	Q & A
CONCURRENT WORKSHOPS			
2.00pm – 3.00pm	MEETING ROOM 1 Community-led responses to outside threats: keeping community strong in the face of adversity Northern Land Council		MEETING ROOM 2 Embodied Futures Dr Deanna Borland-Sentinella & Jacinta de Sousa Pereira, Timor-Leste
2.30pm – 3.30pm	MEETING ROOM 3 Geolingo: Community Development through Placemaking Denise Bijoux, Tauma Lobacheva & Robin Wachsberger. Catalyse, Aotearoa - New Zealand		MEETING ROOM 4 Landscapes of Economic Difference: Decolonising economic participation in regional Lutruwita. Grace Mairéad Walsh & Susan Mansell, Lutruwita – Tasmania, Australia
2.30pm – 3.30pm	IN THE HALL - YARNING CIRCLE Gunga'yunga Djamarrkuliny , The East Arnhem Land Youth Model Team Arnhem Land Progress Aboriginal Corporation , Australia		
3.00pm – 3.30pm	IN THE AUDITORIUM - FILM SCREENING Solidarity chicken plan: a productive aging perspective Yinghao Huang, Taiwan		
3.30pm – 4.00pm	Afternoon Tea		

CONCURRENT PRESENTATIONS			
4.00pm	WATERFRONT 1 Yapa kuja kalu wangkami pirrijirdi jintangka ‘Warlpiri speaking up strongly together’: The story of the Warlpiri Education & Training Trust (WETT) Sharon Nampijinpa & Verona Jurrah Nungarrayi	WATERFRONT 2 Local Service Model of Atayal Domestic Violence in Taiwan: Indigeneity & Culture Yinghao Huang, Taiwan	WATERFRONT 3 Australian Community Workers Association members general meeting
4.15pm	Tafesilafa’i a culturally centred Community of Care Kerry Allan, Sport Waitakere, Aotearoa, New Zealand	Using participatory community development & phenomenological reflective practice within a paediatric children’s hospice in Queensland, Australia Peter Westoby, Australia	
4.30pm	Adult numeracy learner in Timor-Leste Marion Smith, Aotearoa, New Zealand	Lihlombe Lekukhalela - All Communities Need Shoulders to Cry On: The Feminisation of Volunteer Work in Eswatini (Swaziland) Lucius Botes - Presenter Co-author - Saul Chirume, South Africa	
4.45pm	Q & A	Q & A	Q & A
CONCURRENT WORKSHOPS			
4.00pm – 5.00pm	MEETING ROOM 1 Holding the Self-Determined Space; Our Voices, Our Mob Tania Liddle & Leonie Wetherall, Community First Development, Australia		MEETING ROOM 2 Dreaming the Future, Connecting the Past; self-determined community development in action Doyen Radcliffe, Thomas Cameron, Wattandee Community & Tristan Mongoo, Community First Development. Australia
4.00pm – 5.00pm	MEETING ROOM 3 Your Story – Our Story: Using Collective Narrative Practice & The Arts for Creative CD Presenter - Tina Lathouras Co-researcher - Zalia Powell, Australia		MEETING ROOM 4 In Conversation With Heather & Steph: People, Place & Purpose - Exploring Social Value In Rural Communities Heather Ellis & Stephanie Whitaker, Australia
5.00pm	CLOSING PLENARY IN THE AUDITORIUM Clare MacGillivray, Director of Making Rights Real, Scotland Fearless in the defence of rights: What do human rights defenders need to flourish?		
5.20pm – 5.30pm	CLOSE & VILLAGE NEWS		

WEDNESDAY 21ST DAY 2 THEME – CONNECTION

7.45am	Global CD Educators Forum - Decolonising Community Development / Work Education in Meeting Room 1
9.00am	Welcome to Day 2 with Australian Community Workers Association President Nick Toonen OAM, and Chief Executive Officer, Jesu Jacob.
9.30am	Faumuina Felolini Maria Tafuna'i, Edmund Hillary Fellow, Flying Geese Pro CEO, Aotearoa How Indigenous peoples can create frameworks drawing from their culture & the importance of lived experiences in creating these frameworks. Stephanie Harvey – CEO, Community First Development, Australia 'Shifting power: de-colonising community development' Bill Armstrong AO, Retired Community Development Practitioner & Author, Australia. "Everything & Nothing"
11.00am – 11.30am	Morning Tea

CONCURRENT PRESENTATIONS

	WATERFRONT 1	WATERFRONT 2	WATERFRONT 3
11.30am	Supporting Native American Data Sovereignty: The Role of the Partner Holly Scheib & Shawn Duran, MS, Taos Pueblo, USA.	Unlocking Your Inner Social Sector Hero Adam Luecking, Clear Impact, USA	Needs ranking: A qualitative study using a participatory approach. Wilson Majee, University of Missouri, USA
11.45am	Service, Education, or social practice? Reflecting & rethinking the cooperation between University & communities through the University Social Responsibility Project in Taiwan. Chi-Wei Cheng & Leang-yang Lai. Taiwan	Ensuring Strong Voice from the Edge - A critique of participatory methods Chris Dureau, Australia	Grassroots human rights monitoring as a tool for community development Clare MacGillivray, Making Rights Real, Scotland
12.00pm	Q & A	Q & A	Q & A
12.15pm	'Modelling how we want communities to be': How collaborative work practices between multiple agencies were enabled after disaster Lou Mitchell (PhD Candidate) & Associate Professor Michelle Villeneuve. Australia.	'Can community development have more edge by connecting it more deliberately to sustainable development?' Jaya Manchikanti. Australia	Participatory Action Research: A case of the "Working from the Ground Up" model in Hong Kong. Yu-cheung Chan, Kwok-kin Fung & Suet-lin Hung, Hong Kong Baptist University
12.30pm	Building friendships to support women's empowerment. Chris Dureau, Australia	The edge of one's tolerance: a story of how an emerging practitioner took a leap of faith into place-based community development. Brittany Szlezak. Australia	Evaluating Connections through Storytelling: Community, Culture, & Food Access Ramona Madhosingh-Hector, University of Florida & Nicole Breazeale University of Kentucky
12.45pm	Q & A	Q & A	Q & A

CONCURRENT WORKSHOPS

11.30am – 12.30pm	MEETING ROOM 1 Activating action Helen Martin & Janette Devlin. University of Glasgow, Scotland	MEETING ROOM 2 Networking session for First Nations Presenters, Delegates & Guests
12.00pm - 1.00pm	MEETING ROOM 3 Good Governance Program – Achieving stronger/better together through participatory evaluation Karina Menkhorst, Central Land Council & GMAAAC Directors Derek Williams, Joyce Herbert, Robyn Lawson & David McCormack & Kurra AC Directors Valerie Martin & Peggy Granites	MEETING ROOM 4 Creating Connections: community responses to collective trauma Catherine Gordon, KCA Training, United Kingdom

11.30am – 12.30pm	IN THE AUDITORIUM – FILM SCREENING & WORKSHOP Coming to Lithgow Monica Schlesinger, Sugandha Patel & a Student representative. Australia		
1.00pm – 2.00pm	Lunch		
CONCURRENT PRESENTATIONS			
2.00pm	WATERFRONT 1 Impactful CSR initiatives & Community Development: The role of ENL Group as a catalyst in the transformational process of communities in Mauritius. Louis Desire Mario Radegonde & Joëlle Rabot-Honoré ENL Foundation, Mauritius	WATERFRONT 2 A Look Through the Crystal Ball: Insights into Community Engagement Cheryl Burhart-Kriesel, University of Nebraska USA.	WATERFRONT 3 Beyond Charity: Rethinking Refugee Settlement & Community Development Om Dhungel. Australia
2.15pm	Project Thrive: 3219 & beyond Rebecca Taylor & Jasmine Hall, Australia	Active Whakapapa Kerry Allan, Sport Waitakere Aotearoa -New Zealand.	Brave New Places - Selwyn NZ Clare Quirke. Selwyn District Council, Aotearoa -New Zealand.
2.30pm	Q & A	Q & A	Q & A
2.45pm	Shifting the paradigm: working collaboratively across community to end CSE Conrad Townson. Project Paradigm Australia.	Peacebuilding, Conflict & Community Development Dr Sinead Gormally. University of Glasgow, Scotland	Deadly ABCD Michelle Dunscombe, Jodi Sampson & Dee Brooks, Jeder Institute, Australia
3.00pm	Digital Divides, Mobile Phones & Older Adults – Lessons for Practitioners Kwok-kin Fung, Suet-lin Hung, Daniel Wing-leung & Kyle Lang-jie, Hong Kong Baptist University	Activate + Helen Martin, Janette Devlin & Dr Sinead Gormally. University of Glasgow, Scotland.	
3.15pm	Q & A	Q & A	Q & A
CONCURRENT WORKSHOPS			
2.00pm- 3.00pm	MEETING ROOM 1 Learning together through experience Northern Land Council community development representatives & CLC		MEETING ROOM 2 Crafting Community Development in everyday practice. Helen Betts, Susan Allan & Heather Ellis, Australia
2.30pm - 3.30pm	MEETING ROOM 3 Solidarity with First Nations Peoples in the Southwest of Brisbane Presenter - Paula Callaghan Laraine Hinds, Ravina Dean, Helen Wilson. Benarrawa Community Development Association Inc Australia		MEETING ROOM 4 Discovering & Deepening Our Practice for Social Change Through Popular Education Tina Lathouras & Peter Westoby, Australia.
2.00pm - 3.30pm	IN THE HALL - HUMAN LIBRARY Presenters & Delegates have the opportunity to sign up for or borrow someone from the Human Library: Humans to Borrow: Chris Mundy, Australia. Dr Deanna Borland-Sentinella, Australia.		
3.30p - 4.00pm	IN THE AUDITORIUM – FILM SCREENING & YARN Granites Mine Affected Area Aboriginal Corporation (GMAAAC) - Celebrating Our Story Rebecca Humphries (CLC Senior Community Development Officer) Robyn Lawson, David Mc Cormack, Joyce Herbert, Derek Williams & Cyril Tasman (GMAAAC Directors)		
3.30pm – 4.00pm	Afternoon Tea		
CONCURRENT PRESENTATIONS & WORKSHOPS			

4.00pm	WATERFRONT 1 Activating Rural Communities to Attract & Retain Newcomers: Marketing Hometown America Cheryl Burkhardt-Kriesel & Marilyn Schlake. University of Nebraska USA.	WATERFRONT 2 This is a WORKSHOP Foundations Of Queer Regeneration Guy Ritani & Toad Dell Perma Queer, Australia	WATERFRONT 3 This is a WORKSHOP But why? University of Glasgow Community Development Dr Sinead Gormally, Helen Martin, Janette Devlin, Ruth Pearce, University of Glasgow, Scotland
4.15pm	Going the distance: making mental health supports work better in regional communities Lisette Kaleveld & Emma Crane. University of Western Australia		
4.30pm	Addressing complex vulnerability through a holistic relational support model: Findings from a place-based project in Western Australia Emma Crane. University of Western Australia		
3.15pm	Q & A		
CONCURRENT WORKSHOPS			
4.00pm	MEETING ROOM 1 Asset-based Advocacy Kate Munro, Youth Action, Australia	MEETING ROOM 2 Nurrurirr'yundhu Yolŋuwal gakalyu nurruruny – Start with the Yolŋu way first: An ARDS approach to Community Development Gawura Wanambi, Joy Bulkanhawuy, Maratja Dhamarrandji, Jamie Mapleson; ARDS Aboriginal Corporation, Australia	
4.00pm	MEETING ROOM 3 What can Local Government do for Community Development? Rob Gregory. England.	MEETING ROOM 4 The Power of Appreciative Inquiry: applying asset-based/strength-based innovation for radical inclusion & wholeness Zizi Charida. Community Minds, Australia.	
	IN THE HALL “We are fighting for those ones who are behind”: Uplifting the resilient voices of U.S.- resettled refugee women Caitlin Bletscher & Sara Spiers, USA		
	IN THE AUDITORIUM Aperture-shinning a light on CSE Conrad Townson, Project Paradigm, Australia		
5.00pm	CLOSING PLENARY IN THE AUDITORIUM Anastasia Crickley & Anna Clarke, IACD Community Work & Community Development issues & interventions, possibilities & pitfalls, IACD, the UN and multi-lateral organisations		
5.20pm - 5.30pm	CLOSE & VILLAGE NEWS		
7.00pm	GALA DINNER (OPTIONAL EXTRA) AT WHARF ONE, DARWIN WATERFRONT		

THURSDAY 22ND DAY 3 THEME – COMMUNITY

9.00am	Welcome to Day 3 with Dee Brooks from Jeder Institute and Denise Bijoux from Catalyse Book Launch – “ Bhutan to Blacktown: Losing everything and finding Australia. ” – Om Dhungel
9.30am	Cheryl Kickett-Tucker, Dawn Bessarab & Juli Coffin, Mia Mia Community Development Preferencing an Aboriginal lens for an authentic journey toward community development Honorable Governor Gary J. Lujan, & Shawn Duran, Taos Pueblo Government, USA “For Blue Lake and Beyond: Taos Pueblo’s multi-generational community efforts in sovereignty and nation building.” Conversation from the Lounge hosted by Dee Brooks featuring Ani Pahuru-Huriwai (Aotearoa), Jim Ife (Western Australia), Anthony Kelly (Queensland) & Peter Westoby (Queensland), Australia “The Future of Community Development”
11.00am – 11.30am	<i>Morning Tea</i>

CONCURRENT PRESENTATIONS

	WATERFRONT 1	WATERFRONT 2	WATERFRONT 3
11.30am	Developing Communities – Urban Planning in a Remote Context as a Tool for Sustainable Change Rebecca Humphries & Carl O’Sullivan, Central Land Council with GMAAC Directors, Robyn Lawson David Mc Cormack, Joyce Herbert, Derek Williams & Cyril Tasman, Australia	Thriving communities: Building bridges through the sharing of knowledge & experiences among communities in Mauritius Joëlle Rabot-Honoré & Mario Radegonde. ENL Foundation, Mauritius.	Preventing Potential Farm Fatalities by Introducing Artificial Nest Box for Sulawesi Masked Owl in Banggai District, Central Sulawesi Abdil Halimis Stani & Cut Desy Ariani JOB Pertamina Medco E&P Tomori Sulawes, Indonesia.
12.00pm	Q & A	Q & A	Q & A
12.15pm	Participatory Advocacy for Structural Change - Neighbourhood Centres Queensland Chris Mundy. Neighbourhood Centres Queensland, Australia.	Community building at the intersection of culture & community: An asset-based community development approach to health & wellness Dr. Hunter Goodman, University of Arkansas System, USA	Addressing Environmental Justice & Equity for Clean Water Access Across Communities Sreedhar Upendram. University of Tennessee, USA
12.30pm	Daring to lead, together Kylie Lee, Gladstone Regional Council, Australia.	Locally-led projects as vehicles for self-determination Galiwin’ku traditional Aboriginal owner representatives	Leaping Towards Sustainable & Equitable Communities Ramona Madhosingh-Hector. University of Florida, USA.
12.45pm		Q & A	Q & A

CONCURRENT WORKSHOPS

	MEETING ROOM 1	MEETING ROOM 2
11.30am – 12.30pm	Children’s Ground: Nothing about us without us Felicity Hayes, Traditional Owner & Ampe-kenhe Ahelhe; Veronica Turner, Ampe-kenhe Ahelhe. Pauline Grant & Jen Lorains. Children’s Ground, Australia	Climate Extremes - Who is looking after you? You are! (Oral Presentation) Mary Farrow, Emerald Community House, Australia Planning for Disaster with Gender in Mind (Workshop) Melesa Osborne, Rachael Mackay & Steve O’Malley. Gender & Disaster Australia, Australia.
12.00pm – 1.00pm	MEETING ROOM 3 Find your voice: Using the Australian Journal of Community Work to creatively communicate your practice stories. Facilitator: Associate Professor Vicki Banham, Edith Cowan University, Australian Community Work Journal Editorial Advisory Board & IACD. This session commences at 11.30am	MEETING ROOM 4 Act like an organisation, think like a movement – the journey of Inspiring Communities Megan Courtney, Inspiring Communities, Aotearoa, New Zealand
	YARNING CIRCLE IN THE HALL How programs build community justice: Supporting First Nations families with a parent in prison Krystal Lockwood, Aunty Barbie Cohen & Aunty Karen Rhodes, Griffith University, Australia	
1.00pm - 2.00pm	Lunch	

CONCURRENT PRESENTATIONS			
2.00pm	WATERFRONT 1 Local people create provocative action for positive change: the development of the Upper Beaconsfield Bushfire & Biodiversity Tool Caroline Spencer, Suzanne Cross & Frank Archer, Monash University, Australia	WATERFRONT 2 The past is so present: Understanding COVID-19 vaccine hesitancy among African American adults using Qualitative data. Wilson Majee, University of Missouri, USA	WATERFRONT 3 Resilience towards singular person & collective community: A case study of indigenous community development in Taiwan Hsiang-i Teng, Taiwan.
2.15pm	Uncovering the gender-balance story in the Upper Beaconsfield Bushfire & Biodiversity Tool for residents living in a high-risk area Caroline Spencer, Suzanne Cross & Frank Archer, Monash University, Australia	Elevating the role of the community member as citizen scientist and agent of change: Learnings from a doorknocking project for mental health Lisette Kaleveld & Emma Crane. University of Western Australia	Real Estate & Community Development Huston Gibson, Kansas State University, USA.
2.30pm	Q & A	Q & A	Q & A
2.45pm	An act of nature: Challenging gendered community & cultural norms during & after disasters Rachael Mackay & Steve O'Malley, Gender & Disaster Australia	Bajau: Cultural & economic transformation experience Marlon de Luna Era, Ph.D, De La Salle University, Manila Philippines	Bringing to life the Central Land Council's (CLC) Community Development framework strategies Emily Lapinski, Jorge Basave, Julian Redmond, Katie Allen and Bec Osei-Agyemen Central Land Council, Australia
3.00pm	Domestic violence in disaster - off the edge Debra Parkinson, Gender & Disaster Australia	Engaging community to co-create healthy hometowns Cheryl Burkhart-Kriesel & Marilyn Schlake, University of Nebraska, USA	From the Edge to the Centre: Talking Story with Walbira and Shez Shez Cairney & Wlabira Murray, Interplay Project
3.15pm	Q & A	Q & A	Q & A
CONCURRENT WORKSHOPS			
2.00 - 3.00pm	MEETING ROOM 1 Insider reflections & dialogue on resilience & bush fire recovery in small rural communities Dr Stuart Robertson & Dr Louise Morely, University of New England, Australia	MEETING ROOM 2 Being an ally or an accomplice? - getting clear: a sociodramatic exploration Cissy Rock, Community Think, Aotearoa, New Zealand	
2.30pm – 3.30pm	MEETING ROOM 3 At the Intersection of Leadership & Community Development: Best Practices for Building Local Leadership in Rural Communities Dr. Hunter Goodman, University of Arkansas System, USA	MEETING ROOM 4 Seed to Tree: The Journey with Country Doyen Radcliffe, Tristan Mongoo & community, Community First Development, Australia	
	IN THE AUDITORIUM – STORY SLAM - TALL POPPIES STORYTELLING Hosted by Robin Wachsberger from Catalyse, Aotearoa, New Zealand & Darwin Story Slam		
3.30pm - 4.00pm	Afternoon Tea		
CONCURRENT PRESENTATIONS			

4.00pm	WATERFRONT 1 The Peoples Kitchen Tracie Lund & Brooke Mawson, Morwell Neighbourhood House, Australia.	WATERFRONT 2 This is a WORKSHOP from 4pm to 5pm Courage & Renewal for Community Development Workers involved in Disaster Recovery: Sustaining our work through reflective social practice. Lou Mitchell & Noela Maletz, Australia	WATERFRONT 3 The “Edge” work of CD practice in Local Government Tim Burns, PJ Humphreys & Phil Simpson, Sunshine Coast Council, Australia.
4.15pm	Building food literacy - A Tasmanian community program approach Emma Rowell & Sarah Johns, Families Tasmania, Australia.		‘Raisin in a box’: when the edge gets to the centre Morris Beckford, Andrews University & Neighbourhood Group Community Services & Jacqueline St Kitts, LAMP Community Health Centre, Canada.
4.30pm	Barriers & enablers to uptake of innovation for smallholder rice farmers in Timor-Leste Acacio da Costa Guterres, Janine Joyce & Penny Wurm, Charles Darwin University, Australia.		Microfinance & Household Poverty In South Africa: The Case Of Or Tambo Coastal District, Eastern Cape, South Africa Lucius Botes & Wung Collins Akiy. North-West University, South Africa
4.45pm	Q & A	Q & A	Q & A

CONCURRENT WORKSHOPS

4.00 - 5.00pm	MEETING ROOM 1 Contexts that connect:– mapping the initiatives we use to strengthen the discipline of community development within & across regions. Anastasia Crickley & Anna Clarke, All-Ireland Endorsement Body for Community Work Education, Ireland and Northern Ireland	MEETING ROOM 2 These are PRESENTATIONS 4.00pm to 4.15pm Reflexive tracks: When disaster affects the disaster researcher Anna MS Torres, LaTrobe University, Australia
		4.15pm to 4.30pm Don McLeod – community development worker trained by life’s hardships Jan Richardson, Charles Darwin University, Australia
	MEETING ROOM 3 Closing the Digital Divide to Create Connections & Promote Thriving Communities Sreedhar Upendram, Ramona Madhosingh-Hector & Linda Seals, USA	MEETING ROOM 4 Increasing the Practice & Policy Influence of Community Development Anthony Kelly & Peter Westoby, Australia
	CLOSING PLENARY IN THE AUDITORIUM. ABORIGINAL & TORRES STRAIT ISLANDER VOICE TO PARLIAMENT WITH GEORGIA CORRIE, from YES23 Presentation of the Community Housing Ltd WDCD 2023 COMMUNITY ART PROJECT	

VISUAL ARTS INSTALLATIONS IN THE MARKET PLACE

Redefining the Edge Shez Cairney and Walbira Murray, Interplay project, Australia
Living Arts Installation Phi Theodoros, Natasha Sumner, Mark Timberlake, Life without Barriers, Australia

PRACTICE EXCHANGE INFORMATION

Friday 23rd June	Full Day Tiwi Island Arts and Community Development Practice Exchange First Nations Practice Exchange
Saturday 24th June	3 day Kakadu & Katherine Practice Exchange



ACWA
AUSTRALIAN COMMUNITY
WORKERS ASSOCIATION

LEADS THE DEVELOPMENT AND RECOGNITION OF THE COMMUNITY WORK PROFESSION IN AUSTRALIA.

ESTABLISHED IN 1969, WE:

PROMOTE THE
PROFESSION OF
COMMUNITY WORK.

OFFER MEMBER
BENEFITS TO
PRACTITIONERS.

REPRESENT
THE INTERESTS
OF MEMBERS.

ACCREDIT
RELEVANT TERTIARY
COURSES.

ARE A MIGRATION
SKILLS ASSESSING
AUTHORITY.

ENDORSE RELEVANT
PROFESSIONAL
DEVELOPMENT.

DISCOVER YOUR PARTNER IN PROFESSIONAL PRACTICE

www.acwa.org.au



catalyse

Community Engagement Agency
in the street, neighbourhood and community

We invite you to join...

GeoLingo

Theme: Placemaking
As Community Development
When: Tuesday 2:30pm
Where: Meeting Room 3

STORY SLAM

True Stories About Collective Effort,
Shared Knowledge And Empathy

Theme: Stronger Together
When: Thursday 2:30pm
Where: The Auditorium



COMMUNITIES FOR CHANGE



The Jeder Institute creates positive change for individuals and communities, around the world, by bringing people together to realise their full potential, build on their existing networks and community strengths

www.jeder.com.au
Email us: info@jeder.com.au



International Association for Community Development
Association Internationale de Développement et d'Action Communautaires

**JOIN
HERE
TODAY!**

Join the IACD global network

The International Association for
Community Development is the global
network for professional community
development practitioners.

Benefits of membership include:

- Regular social media news and e-bulletin
- Access to community development resources
- Opportunities to participate in Practice Exchanges
- Discounted rates at IACD conferences;
- Discounted subscriptions to CDJ
- Share your work and experiences with a global audience, YouTube channel, social media sites, and other publications;
- Opportunity to join the IACD Board of Trustees.

Advocate
for sustainable
community
building

Facilitate
learning and
practice
exchange

Connect
people who
work with
communities

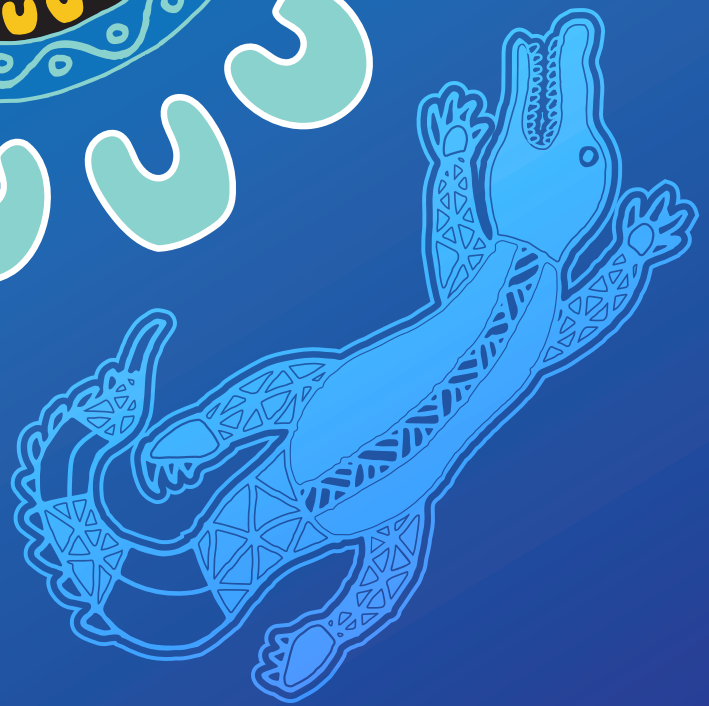
iacdglobal.org/joinus

[in](#) IACD [f](#) IACDglobal [t](#) IACD_global

[v](#) IACD Global [i](#) iacdglobal

IACD has consultative status with the United Nations. Registered in Scotland as a Scottish Charitable Incorporated Organisation no. SC036090.





We acknowledge and pay our respects to the Larrakia people, the traditional owners of the Darwin region where WCDC2023 will be hosted. The Larrakia people have a deep, spiritual connection to the land and are responsible for ensuring it is respected by all that use it.

We commit to respecting the land, people and culture of the Larrakia Nation during the conference.